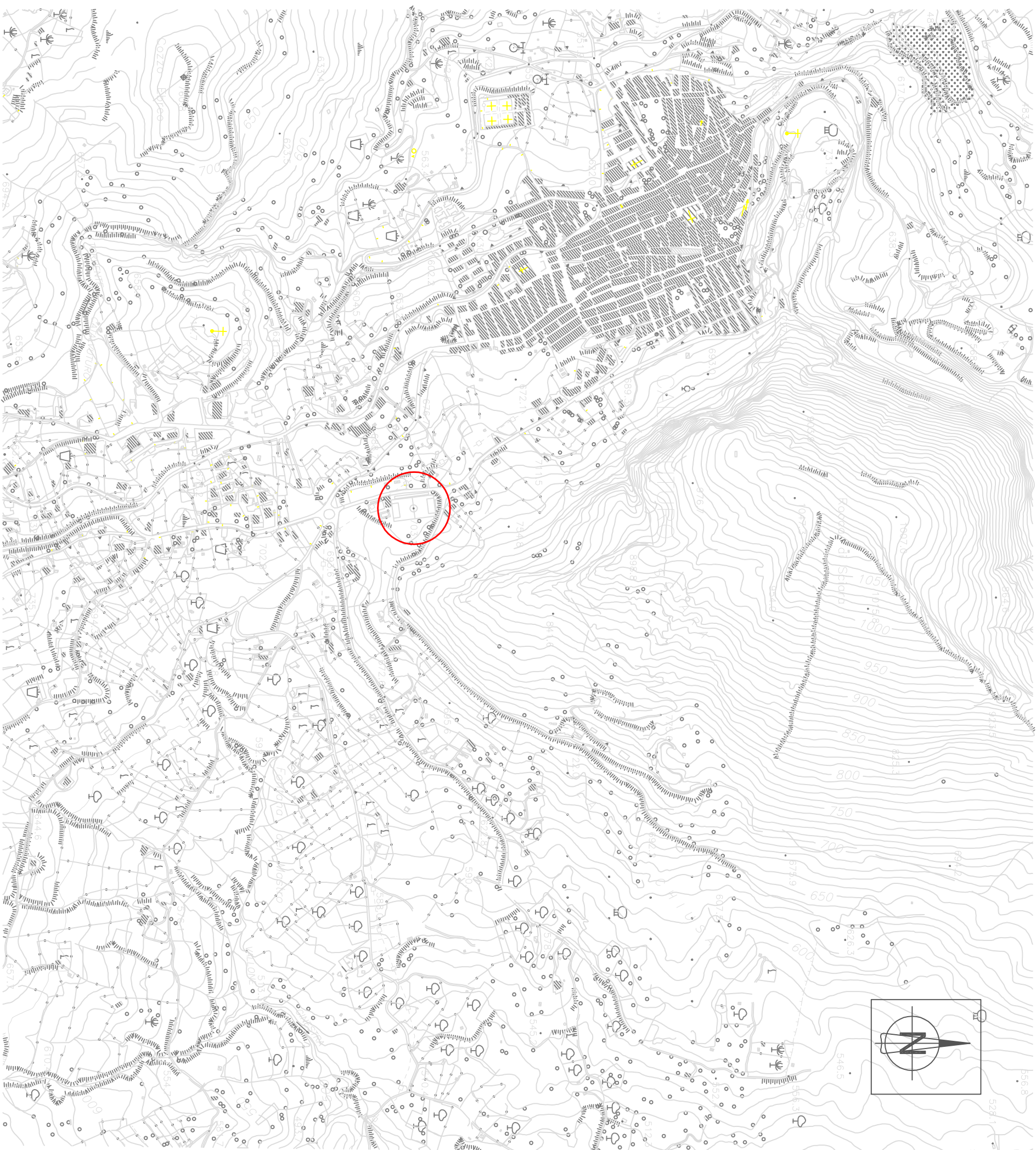
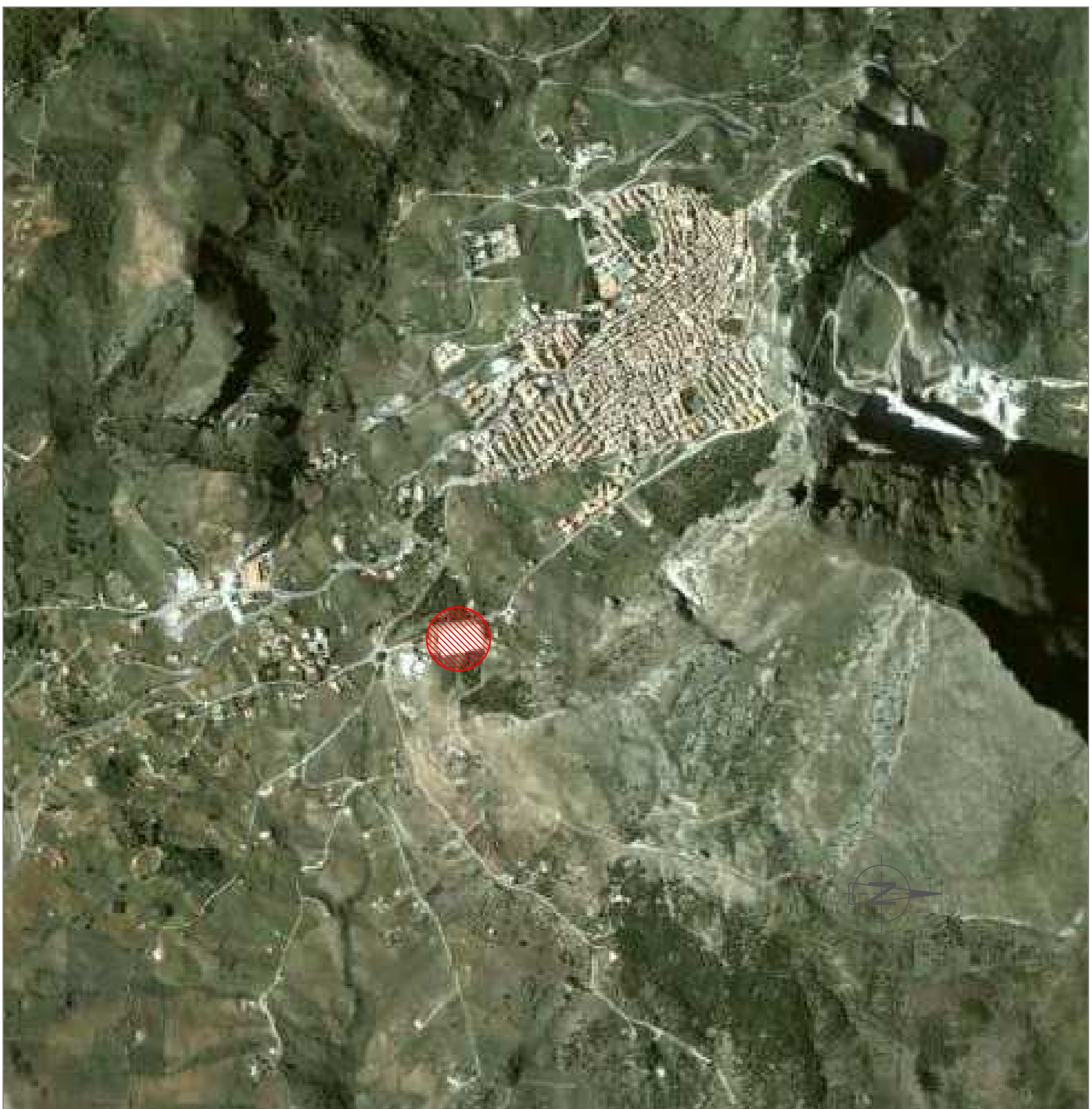


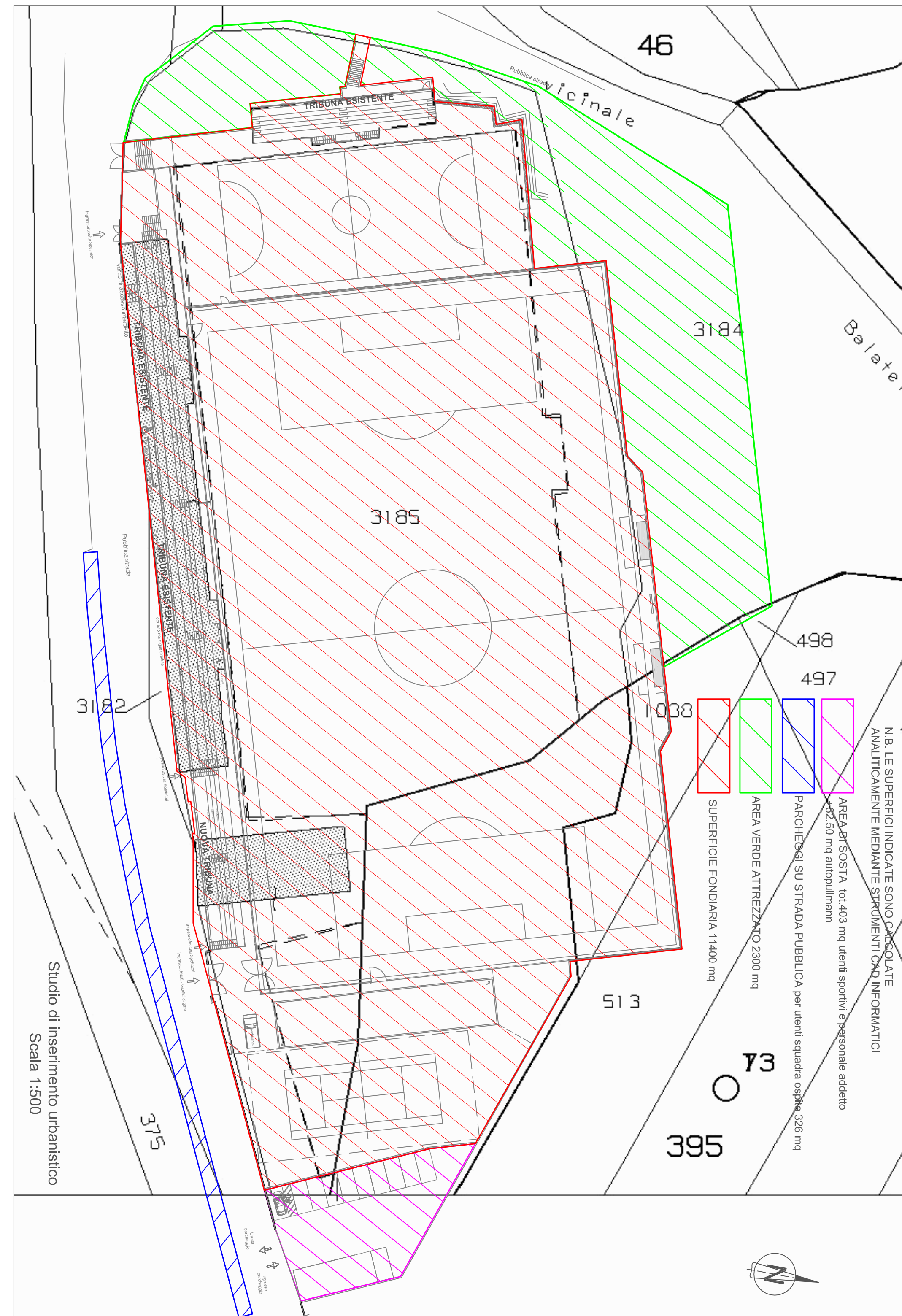
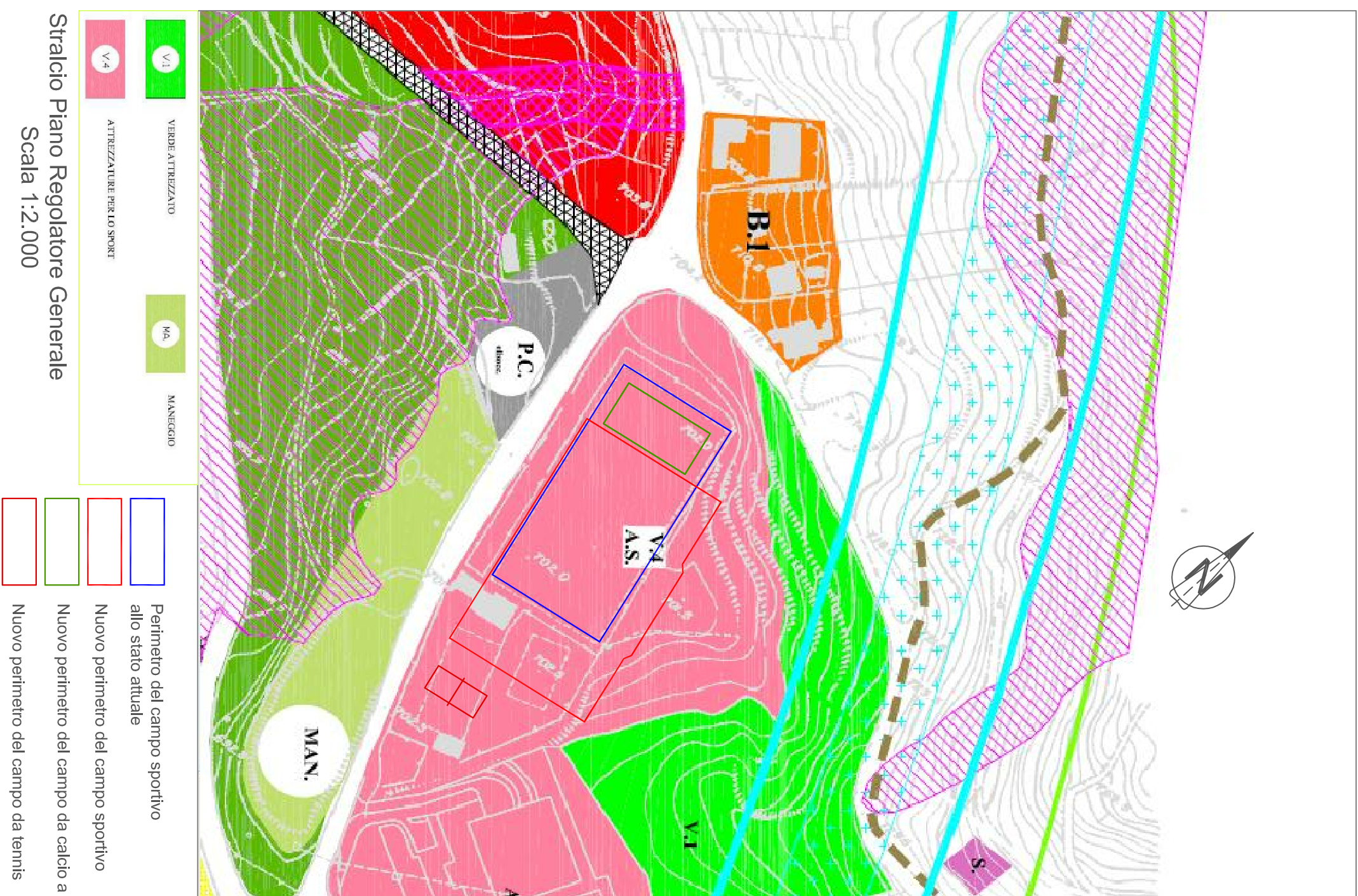
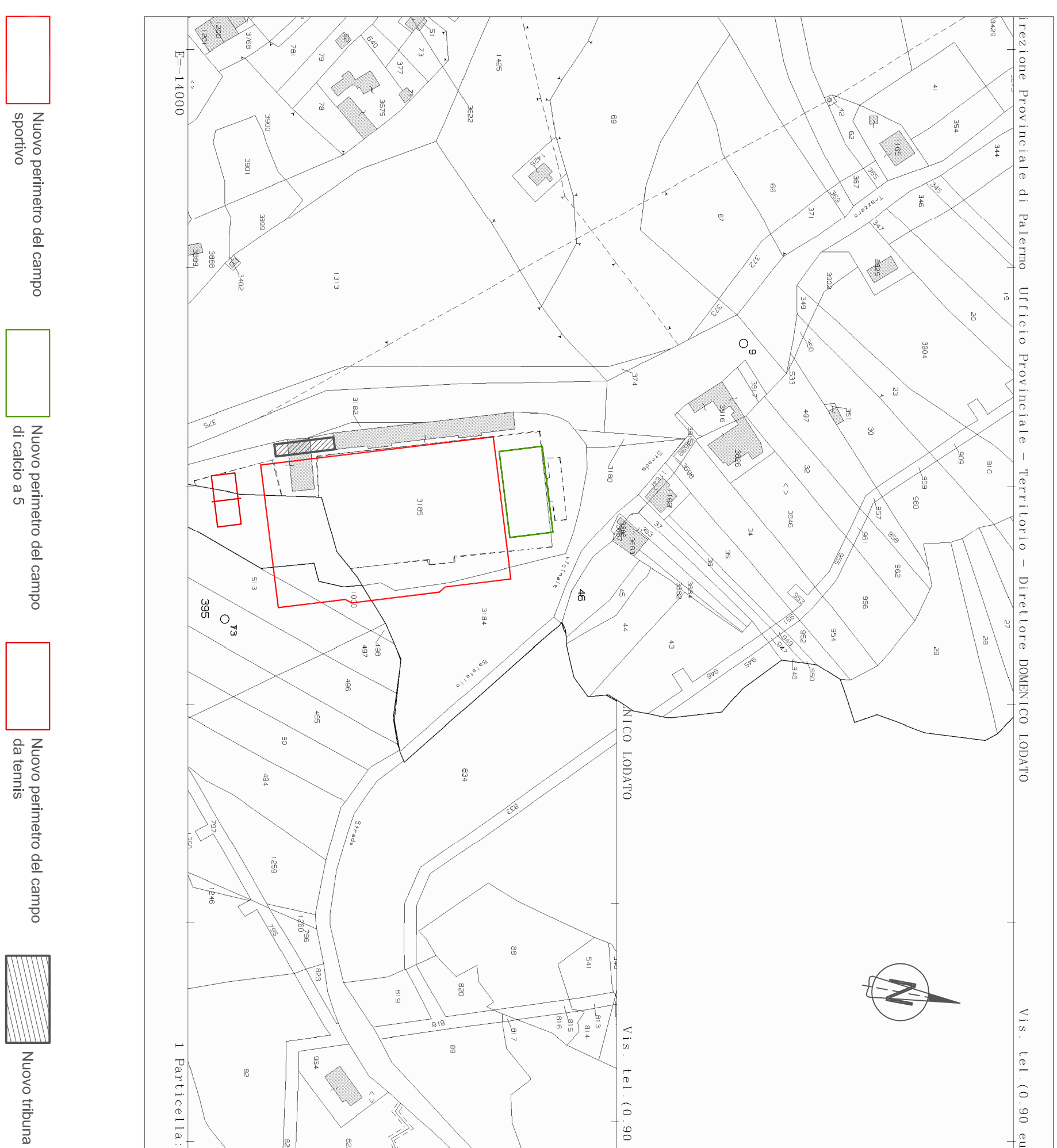
Stralcio Aerofotogrammetrico  
Scala 1:10.000




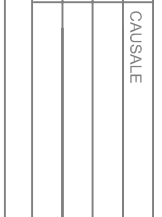
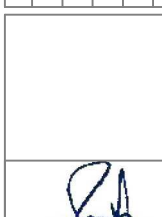


Ortofoto  
Scala 1:10.000



Stralcio catastale  
Scala 1:2.000



<p>Titolo progetto</p> <p><b>PROGETTO DI COMPLETAMENTO DEL CAMPO SPORTIVO DI CALTAVUTURO</b></p>		<p>Titolo abbozzo</p> <p><b>INQUADRAMENTO TERRITORIALE Stradi Ortofo, Aerofotogrammetria, PRG, Caltasale, Studio di inserimento urbanistico</b></p>	
<p>Titolo di progettazione</p> <p><b>PROGETTO DEFINITIVO ED ESECUTIVO</b></p>		<p>  N. Imp. <b>3.1</b>  DATA <b>dicembre 2018</b> </p>	
<p>REVI. CAUSALE</p> <p>00</p>		<p>PROGETTISTA</p> <p><b>ING. ROBERTO CANTALONE</b></p>	
<p>ACQUEDOTTAMENTI</p>		<p>  </p>	
<p>La Mediana di piazza IV 96003 Caltavuturo di Caltanissetta</p> <p>tel. 093 729090 fax 093 8380703 www.ingegnerica.it</p>		<p>  </p>	
<p>ING. CANTALONE</p>		<p>  </p>	